

Overview

Frequency Band

860MHz-960MHz

Chip

NXP UCODE8

Antenna Dimensions

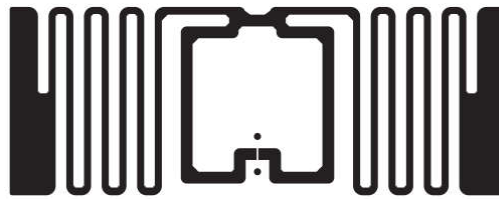
16*42mm/0.630*1.654inch

International Standard

ISO/IEC 18000-63 Type C

Applications

Apparel management
Logistics and transportation
Warehousing management

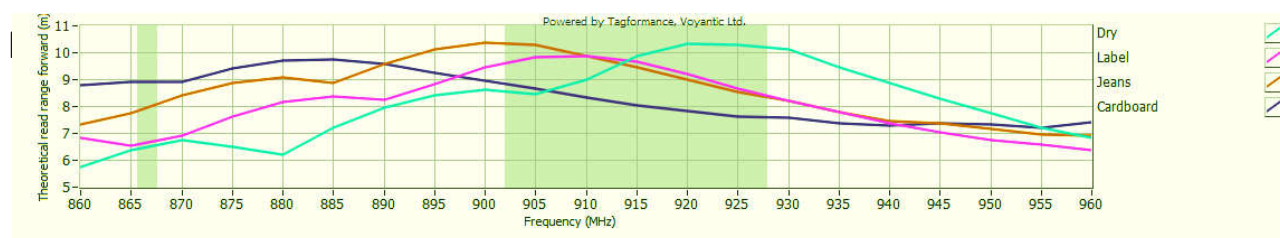
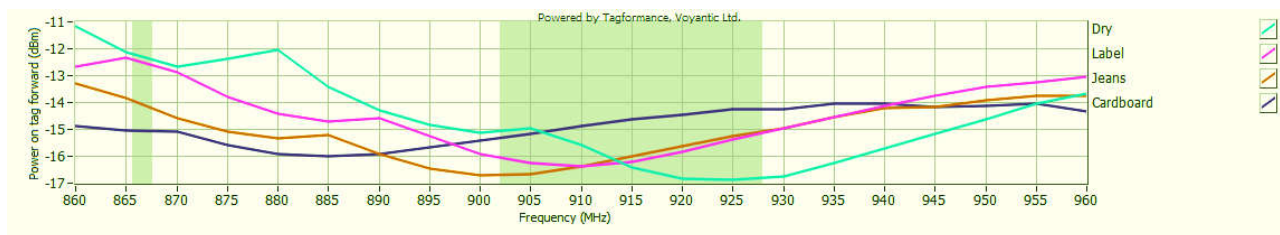


This antenna adopts NXP Ucode8 chip, which supports automatic adjustment function. Its high efficiency and excellent performance make it widely used in apparel management, warehouse management, logistics and transportation fields etc. It will help to provide the efficiency of cargo inventory, monitor the flow direction of cargo, and ensure the safety of cargo transportation.

Technical Features

Model	OS31216	OS32110	OS331847
Delivery Format	Dry Inlay	Wet Inlay	Label
EPC Memory	128Bits	128Bits	128Bits
User Memory	0Bits	0Bits	0Bits
Die-cut Dimension	-	46*19mm	46*19mm
Inlay Substrate	50um PET	50um PET	50um PET
Standard Pitch	21.59mm	21.59mm	21.59mm
Web Width	55mm	55mm	55mm
Core Size	76.2mm/3inch	76.2mm/3inch	76.2mm/3inch
Quantity / Reel	10000±300Pcs/Reel	5000±2Pcs/Reel	5000±2Pcs/Reel
Operating Temperature	-20℃ to +50℃ (20% to 80%RH)		
Remarks	Wet inlay and Label are regular size. Other size can be customized.		

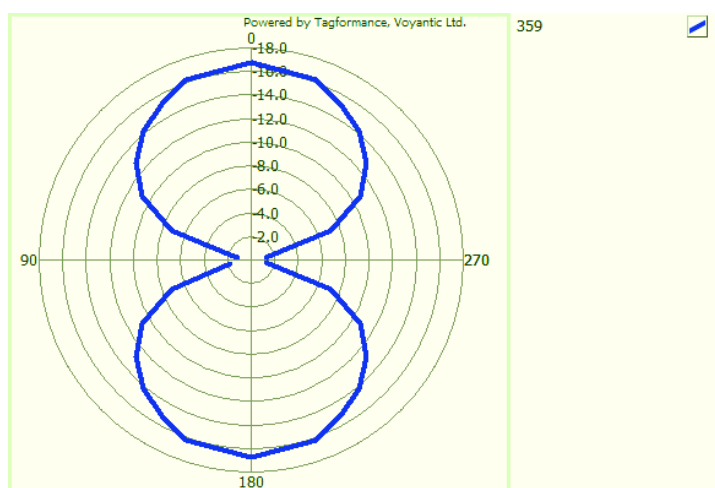
Sensitivity



Sensitivity&Read Rang Test power: 4W EIRP

For countries that allow 2W ERP, please reduce the result by 11%

Orientation sensitivity



All graphs are indicative: performance in real life applications may vary.