

## Overview

### Frequency Band

860MHz-960MHz

### Chip

NXP UCODE8

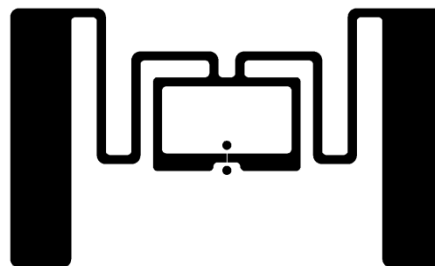
### Antenna Dimensions

30X50mm/1.181\*1.969 inch

### International Standard

ISO/IEC 18000-63 Type C

### Applications

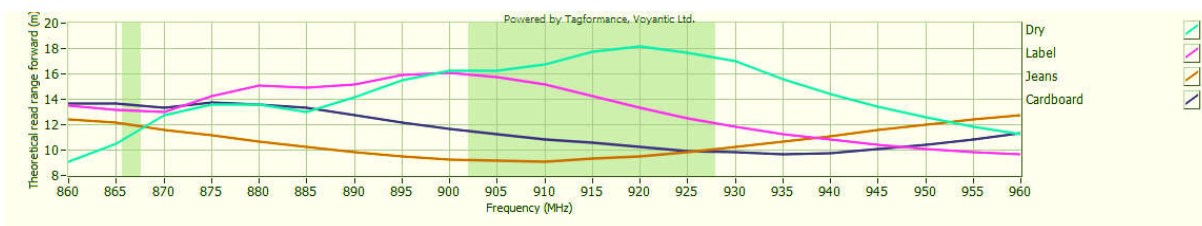
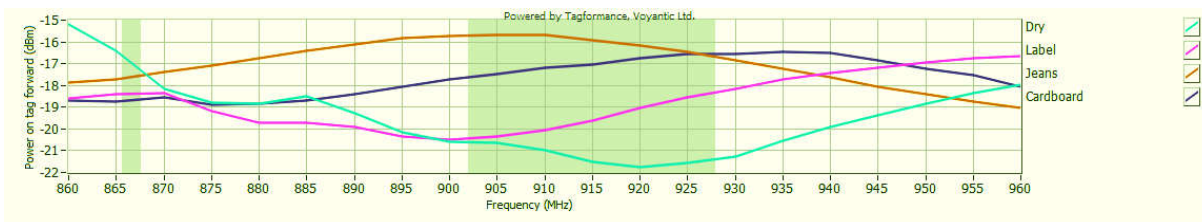
 Apparel management  
 Logistics and transportation  
 Warehousing management


This antenna adopts NXP Ucode8 chip, which supports automatic adjustment function. Its high efficiency and excellent performance make it widely used in apparel management, warehouse management, logistics and transportation fields etc. It will help to provide the efficiency of cargo inventory, monitor the flow direction of cargo, and ensure the safety of cargo transportation.

### Technical Features

Model	OS31090	OS32060	OS33363
Delivery Format	Dry Inlay	Wet Inlay	Label
EPC Memory	128Bits	128Bits	128Bits
User Memory	0Bits	0Bits	0Bits
Die-cut Dimension	-	54*34mm	54*34mm
Inlay Substrate	50um PET	50um PET	50um PET
Standard Pitch	35.983mm	35.983mm	35.983mm
Web Width	63mm	65mm	64mm
Core Size	76.2mm/3inch	76.2mm/3inch	76.2mm/3inch
Quantity / Reel	5000 ± 300Pcs/Reel	3000 ± 2Pcs/Reel	3000 ± 2Pcs/Reel
Operating Temperature	-20℃ to +50℃ (20% to 80%RH)		
Remarks	Wet inlay and Label are regular size. Other size can be customized.		

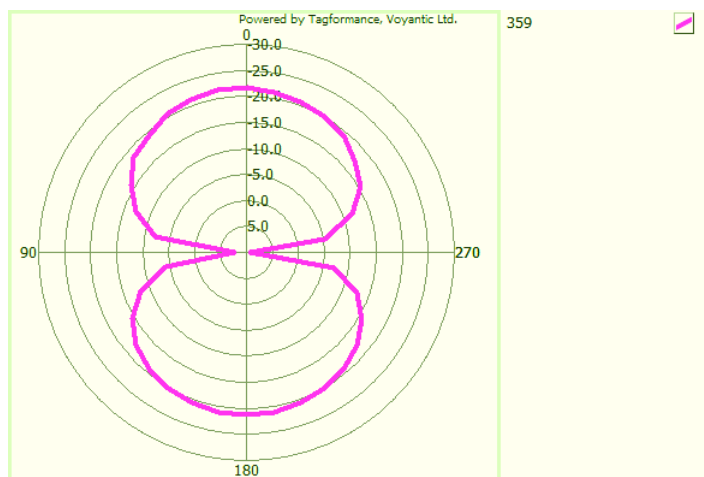
## Sensitivity



Sensitivity&Read Rang Test power: 4W EIRP

For countries that allow 2W ERP, please reduce the result by 11%

## Orientation sensitivity



All graphs are indicative: performance in real life applications may vary.